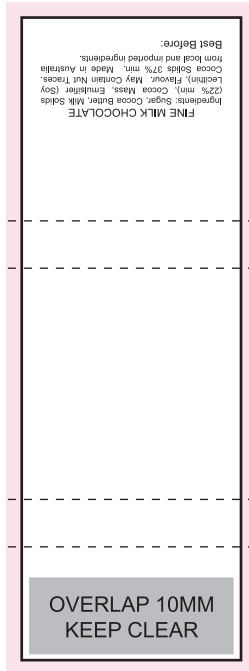


# ART APPROVAL

All colours used in this document are indicative only and they may vary across a variety of printing techniques and confectionery



## BACK OF LABEL Must have ingredietnts

### FINE MILK CHOCOLATE

Ingredients: Sugar, Cocoa Butter, Milk Solids (22% min), Cocoa Mass, Emulsifier (Soy Lecithin), Flavour. May Contain Nut Traces. Cocoa Solids 37% min. Made in Australia from local and imported ingredients.

Best Before:

### NOTES

- Wrapper Size: 29mmW x 85mmH
- █ Bleed: 2mm (33mmW x 89mmH)
- - - Safe Print Area: WITHIN 3mm of edge of label

When artwork is printed,  
there can be movement of up to 3mm



Image Impression Only  
NOT to Scale

Wrapper 100%

**Product Code : CC007**

Description : Neopolitan Chocolate with personalized wrapper

Order# :

Company Name :

Contact :

Wrapper Size : 29mmW x 85mmH

Foil colour : Silver

Print Colour : **Customer must provide PMS Colour print guide**